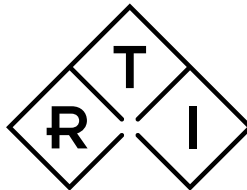


# Ocean Next

Installation Guide



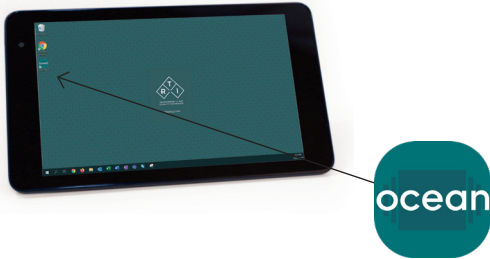
INDEPENDENT X-RAY  
QUALITY ASSURANCE

# Ocean Next pre-installed on Tablet



1. Turn on Your meter

2. Turn on Your tablet



3. Start Ocean

Find and tap the Ocean icon on the desktop.

## 4. User Information

When starting Ocean Next the first time you must specify a user profile and default settings. It is recommended to use your personal e-mail as username. The e-mail address will only be used in case you choose to send a support file to RTI Group, or have to ask for a new password. Name and organization/company are automatically used in printed reports.

Welcome to Ocean Next

User information

Username:

Password:

Confirm password:

Keep me logged in (recommended)

First name:

Last name:

Organization/company:

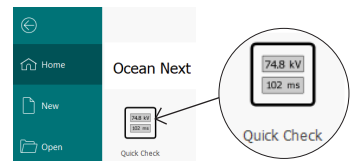
Save Cancel

Username must be an e-mail address. It is recommended that you use your personal work e-mail address. It is stored in Ocean and will not be used for any other purpose without your approval. All fields are mandatory.

## 5. Enter Quick Check

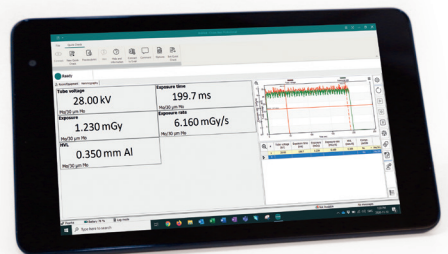
After the settings wizard is finished, the Backstage will be shown on the display. Start Quick Check, and wait for the meter to connect via bluetooth and be ready to measure.

Follow on-screen instructions.



## 6. Make an Exposure

Make an exposure and you will get your first measured data including radiation waveforms.



# For Laptop – Install Ocean Next

For installation on another unit (i.e. your laptop) – find Ocean Next on the USB stick.

For latest version of software and Quick Guides - visit the RTI website, <https://rtigroup.com/rti-support/rti-software-download-center/>



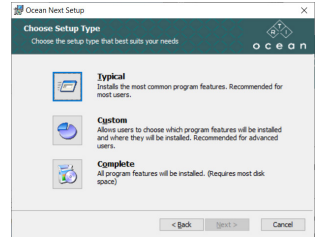
<https://rtigroup.com/rti-support/rti-software-download-center/>

## Run Ocean Next Installer

Run the file "OceanNextInstaller\_...".

Follow on-screen instructions. When the window "Choose Setup Type" is shown - Select "Typical".

When ready - follow step 1 to 6 on page two to make your first measurement with Ocean Next.



### Notices:

In case you have Ocean 2014 installed on your computer, you will be asked during the installation process if you want to import your data from Ocean 2014. If you accept this, all your data from Ocean 2014 will be imported and available in Ocean Next. Your old data and Ocean 2014 will be left exactly as it is and will continue to work as before.

Ocean Next is installed for one user and will require you to specify a username and password. It is recommended, in case more than one person use the same computer to run Ocean, that each user has its own Windows account on the computer and installs its own copy of Ocean with its own username and password. Working in this way, will make your and your colleagues setup compatible with up-coming cloud and account functionality.

## Training

Make use of your vouchers to get training on Ocean Next and your new meter.

Use the QR code below or visit the RTI Academy website at

<https://rtigroup.litmos.com/self-signup/>



Self Sign Up for training

<https://rtigroup.litmos.com/self-signup/>

# Ready to Experience Ocean Next

Quick Check is available independent of the licence level delivered and stored in your meter. Quick Check is, as the name indicates, the quick display of your meter. But it also offers much more, such as quick reports, storage of data, and Excel export functionality.

## The three licence levels

### QUICK

- Display adapts to measurement situation
- Plug-n-play probe attachment
- Display adapts to screen size
- Saving measurements
- Printout of fixed report
- Basic Excel connection

### ADVANTAGE

- Complete QUICK functionality
- Measurements in the Studio
- User-defined templates
- Single-page sessions
- Analysis with user-defined pass/fail criteria
- Print-out of a user-defined report
- Full Excel connection

### PROFESSIONAL

- Complete QUICK and ADVANTAGE
- Site database for storage of measurements
- Multi-page sessions
- Trend analysis

For more information and training possibilities, please contact your local RTI representative or visit the RTI Academy website, [www.rtigroup.com/training/](http://www.rtigroup.com/training/)



[www.rtigroup.com/training/](http://www.rtigroup.com/training/)