



INDEPENDENT X-RAY  
QUALITY ASSURANCE

# Cobia Vertical Holder

## Getting Started

---

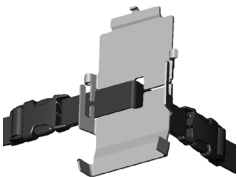
Congratulations to your new Cobia Vertical Holder from RTI. The Cobia Vertical Holder is specially designed for attaching the Cobia to vertically surfaces like a wall bucky, or dental Cone Beam CT units.

The Cobia Vertical Holder consists of the following parts:

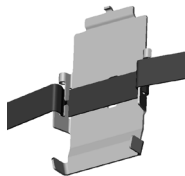
1. *1 holder base*
2. *1 adjustable strap with clips and suction cup*



The Images below show the mount of the strap in different situations.



*When attaching the holder around a corner. Used when image receptor is located close to an edge.*



*When attaching the holder on a countersink image receptor.*

If you have any questions, please contact your local RTI representative.