



INDEPENDENT X-RAY
QUALITY ASSURANCE

Use with

☒ RTI Scatter Probe ☒ Piranha ☒ Cobia



What's new in Ocean next 3.0 Release highlights

What's New in Ocean Next™ 3.0

Ocean Next 3.0 is a major new feature release for Piranha, Cobia and Scatter Probe. One of the major highlights of this release is the introduction of our new cloud-based service: myBox. In addition, there are numerous improvements in workflow, efficiency and performance based on global user feedback.

New feature highlights

New cloud functionality: **myBox**



Forget about backing up – let Ocean Next do it for you!

With the Ocean Next™ 3.0 update, you can connect to our new cloud service myBox. All your Ocean Next templates and measurements will be stored automatically and kept safe. You can access your database from multiple devices and can now share measurements and templates with colleagues, directly from Ocean-to-Ocean. Significantly increase your efficiency, ensure traceability across your entire team and don't worry about backing up your QA data again.

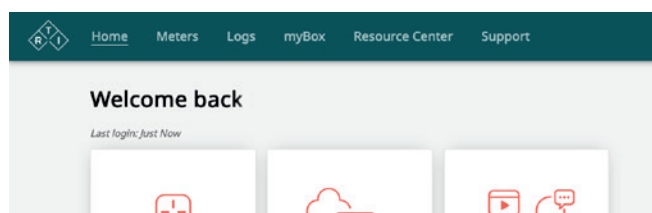
Start your free trial today at
myrti.rti-group.com/mybox

New updates in myRTI

From the Home screen in Ocean Next 3.0, there is a new icon for myRTI, taking you straight to your personal user portal. Within the myRTI portal, there is extended functionality and product support:



- **Meters** – access your calibration certificates and meter information
- **Logs** – access to your measurement log
- **Resource Centre** – access training, how-to guides, application notes and much more
- **Support Portal** – need help with Hardware or Software? Access the support guide library and contact our technical experts.
- **myBox** – sign up to our new cloud functionality for automatic backup of your Ocean database and much more.



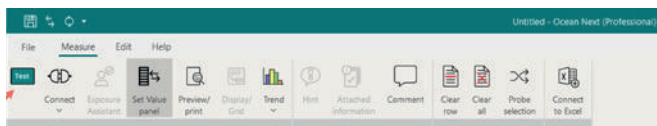
New Updates to Test View and Studio View

Ocean templates are used globally for efficient and traceable X-ray test and QA measurements. They can be used for streamlining workflows, compliance with regulation, automating analysis and customizing reports. Ocean allows users to maintain traceability through the entire process, eliminating possibility for transcription errors or incorrect settings.

In Ocean Next 3.0, there have been improvements in the display of Test View and Studio View with new icons, making it simpler than ever to perform measurements with Ocean templates.

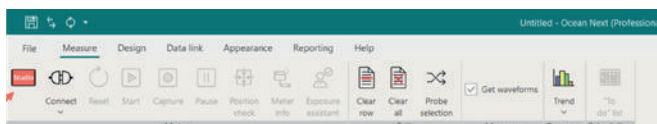
Test View

By default, Ocean templates will open in the new Test View. This is where to run your Ocean templates and make exposures. Test View offers a fixed layout regardless of template design, making it easy and efficient for all users to run Ocean measurements.



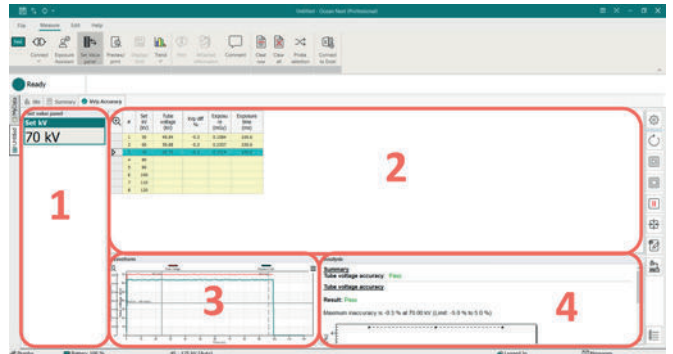
Studio View

Switch to Studio View to modify your templates. The menu bar expands in Studio View, giving you more options to make changes to your template. This is the view for users who want to modify templates before distributing to your team.



Overview of Test View

1. **Set Value Panel** – settings to be entered into the X-ray system are displayed in large text.
2. **Exposure Log** – track each exposure with relevant values and calculations.
3. **Waveform data** – can be seen for each exposure, easily enlarged for analysis.
4. **Automated analysis** – provides Pass / Fail summary immediately with each exposure.



New workflow for RTI CT Dose Profiler (CTDP)

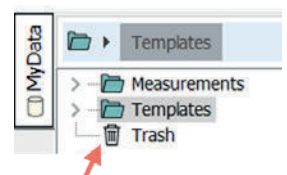
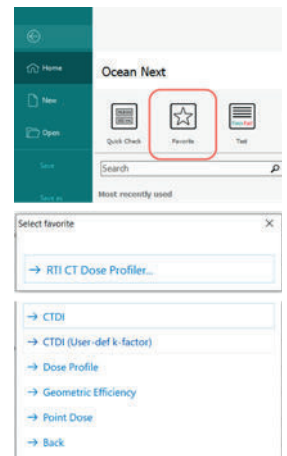
Ocean Next makes it simpler than ever to start measurements with the '**Favorite**' menu. You can save your most-used Ocean templates to the Favorites folder on the Home screen, to streamline repeat workflows. RTI Group have created numerous example templates to get started with, which can be used as a starting point to create your own customized templates and reports.

In Ocean Next 3.0, all the relevant **templates for CTDP** are in the **Favorite** menu, increasing efficiency and reducing set-up time.

For those new to using CTDP, the new updates in the CTDP manual will guide you through every step.

New trash folder

Deleting your measurements or templates can now be recovered from the trash folder. Select the 'Test' icon on the Home screen to access your Ocean database, and you will see the new Trash folder icon.



Improved performance of Ion Chambers

There has been a significant improvement in the triggering behaviour for use of ion chambers with the RTI Chamber Adapter, reducing the occurrence of 'self-triggering', where the chamber has triggered based on rigorous movement. This is a major improvement in the workflow for users of the DAP chambers and CT ion chambers.



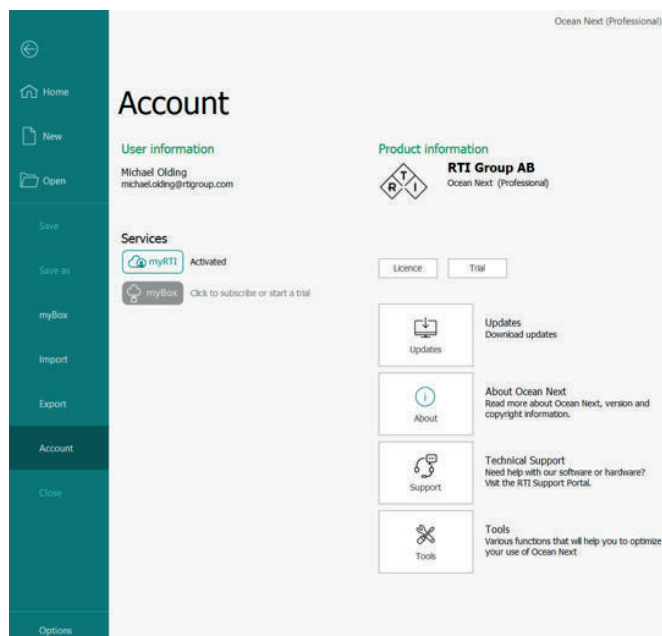
Updated Account Page

Users can easily manage their myRTI and myBox accounts from the "Account" menu on the backstage.

New **"Tools"** menu to manage accounts.

New link to **"Technical Support"**, taking you directly to the RTI Support Portal

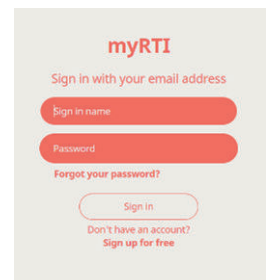
Remember – users can also press 'F1' to access the full **built-in Ocean Next user's manual** when using the software, for instant guidance and relevant information.



Features Continued from Ocean Next v2.0

Log-in to myRTI when you start Ocean Next.

When starting Ocean Next for the first time, you will be required to log-in to myRTI, which gives you access to your personal myRTI portal.



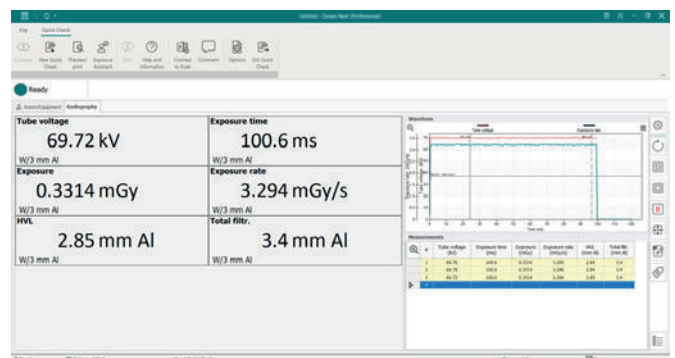
If you have not yet created an account, simply click on **"Sign up for free"**.

You will need internet on the first time you log-in to myRTI, but you do not need internet to use Ocean Next thereafter. myRTI will stay logged-in meaning you get all the benefits of myRTI without affecting efficiency. The new myBox service is hosted within myRTI.

Quick Check

The popular Quick Check display continues with the same intuitive design. Designed for all users to view your measurement values, waveforms and exposure log in one screen.

Easily print your results using **Reporting** or link out to **Excel**. Ocean can always save your data for full traceability and compliance.

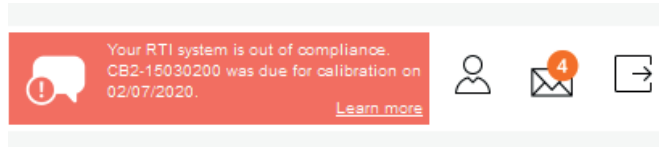


Ocean Next in the Production Environment

Ocean Next has the same ability to allow automation within the production environment. Users in the production environment can develop software (for example using the widely used LabView SW) to control Ocean automatically and utilise Piranha without manual interaction.

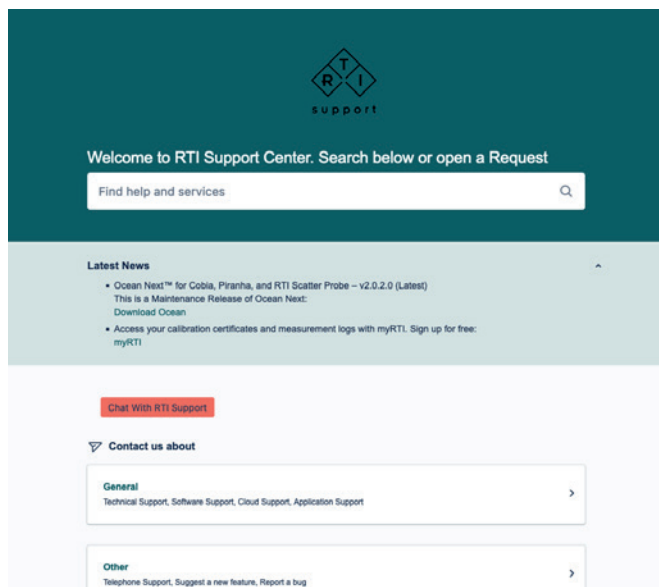
Calibration reminders

Ocean Next will show the calibration warning lamp on the Ocean Next Home screen, informing of upcoming calibration due dates and when the due date has passed (image). Click the reminder to visit the RTI Service & Calibration web page.



RTI Support Portal

The RTI Support portal can be accessed through myRTI, and allows users to find help and services through an inventory of informative articles. Plus, you can submit a question or request to our team of RTI experts.



FAQ's

Can I keep my data if I upgrade from Ocean 2014 to Ocean Next?

Yes. When you start Ocean Next, your database can automatically be converted to the new format so you can carry across all your data. Your old database is also kept in the old format.

Can I still use Ocean 2014 while I start using Ocean Next?

Yes, your data will be available on both software platforms. However, the two versions don't share the same root folder, so any new measurements made in Ocean Next will not appear in Ocean 2014.

I use templates in Ocean 2014 – will these work in Ocean Next?

Yes. All templates created in Ocean 2014 will work in Ocean Next.

Will all my data automatically be backed up with Ocean Next?

Not automatically, but by subscribing to myBox, your entire database is automatically backed up digitally, so you can recover at any time, from any new device. myBox has a free trial which you can begin with, to experience the benefits.

Are there any How-To videos to help me get up and running?

Yes. Simply sign-up for free to myRTI when you first launch Ocean Next and you will have access to the RTI Support and Resource Centre.

What happens to my license level?

Your license level will be the same in Ocean Next as it was in Ocean 2014. Note – Ocean "Connect" is now called Ocean "Advantage" in Ocean Next and has many more features than in Ocean 2014.

Can I use the new software on my current device?

Yes. Ocean Next will work on the same device you used for Ocean 2014. [Check the minimum PC requirement specs here.](#)

Where can I download the new software?

Simply follow this link to <https://rtigroup.com/resource-center/rti-software-downloads>.



RTI Group Headquarters
Flöjelbergsgatan 8C
SE-431 37 Mölndal, SWEDEN

Phone: +46 (0) 31 746 36 00
sales@rtigroup.com
www.rtiigroup.com

RTI Group North America
33 Jacksonville Road, Bldg. 1
Towaco, NJ 07082, USA

Phone: +1 800-222-7537
sales.us@rtigroup.com
www.rtiigroup.com