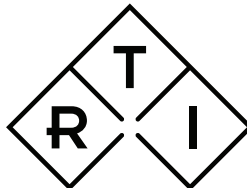
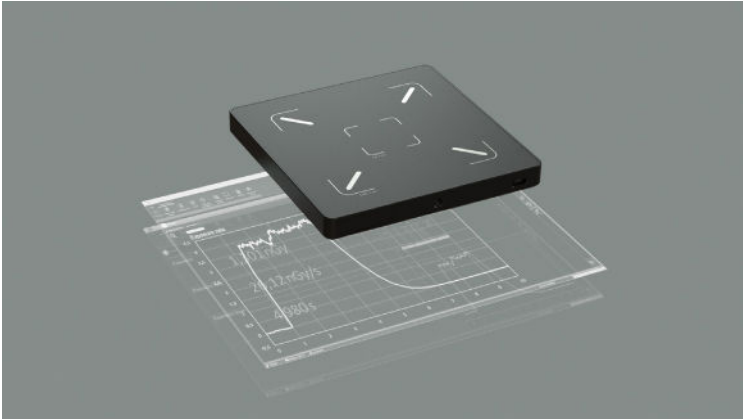


Ocean Next

Getting Started



INDEPENDENT X-RAY
QUALITY ASSURANCE

Ocean Next pre-installed on Tablet

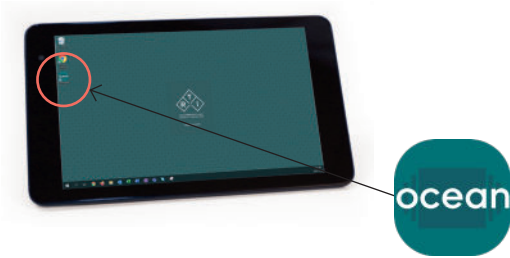
1. Turn on your meter

Connect the RTI Scatter Probe to the Tablet using the included 5 m USB cable.

2. Turn on your tablet

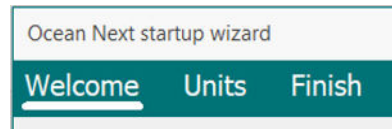
3. Start Ocean

Find and tap the Ocean icon on the desktop.



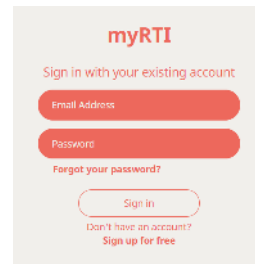
4. Ocean Next startup wizard

Specify Tester information (used on printed Ocean measurement reports) and Unit preferences.



5. Create myRTI account

You must activate Ocean by logging-in to myRTI. Select "Sign up for free" to create myRTI account (requires internet on first log-in).



6. Enter Quick Check

Backstage will be shown, select "Quick Check". The meter will connect via USB. Follow on-screen instructions.



7. Make an Exposure

Make an exposure and you will get your first measured data including radiation waveforms.



For Laptop – Install Ocean Next

For installation on another unit (e.g. a laptop) – find Ocean Next on the USB stick.

For latest version of software and Quick Guides – visit the RTI website, <https://rtigroup.com/rti-support/rti-software-download-center/>

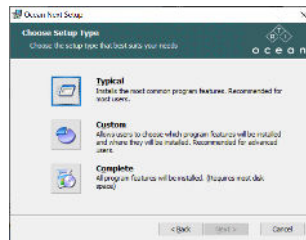


<https://rtigroup.com/rti-support/rti-software-download-center/>

Run Ocean Next Installer

Run the file "OceanNextInstaller_...".

Follow on-screen instructions. When the window "Choose Setup Type" is shown - Select "Typical". When ready - follow step 1 to 6 on page two to make your first measurement with Ocean Next.



Moving from Ocean 2014 to Ocean Next

In case you have Ocean 2014 installed on your computer, you will be asked during the installation process if you want to import your data from Ocean 2014. If you accept this, all your data from Ocean 2014 will be imported and available in Ocean Next. Your old data and Ocean 2014 will be left exactly as it is and will continue to work as before.

Ocean Next is installed for one user and will require you to specify a username and password.

It is recommended, in case more than one person uses the same computer to run Ocean, that each user has its own Windows account on the computer and installs its own copy of Ocean with its own username and password. Working in this way, will make your and your colleagues setup compatible with up-coming cloud and account functionality.

Training

Make use of your vouchers to get training on Ocean Next and your new meter. Use the QR code below or visit the RTI Academy website at <https://rtigroup.litmos.com/self-signup/>



Self Sign Up for training

<https://rtigroup.litmos.com/self-signup/>

Ready to Experience Ocean Next

Quick Check is available independent of the licence level delivered and stored in your meter. Quick Check is, as the name indicates, the quick display of your meter. But it also offers much more, such as quick reports, storage of data, and Excel export functionality.

The three licence levels

QUICK

- Plug-n-play display
- Save measurements
- Print basic reports
- Basic Excel connection

ADVANTAGE

- User-defined templates
- Measurement analysis
- Enhanced reporting
- Full Excel connection

PROFESSIONAL

- Quality Control planning
- Data management
- Enhanced measurement templates with trend analysis

Benefits of myRTI

myRTI is your personal user portal, where you can access everything you need for your meters and probes, such as calibration certificates, device information, manuals, help guides, the RTI Support portal and much more. Plus, myRTI is the home of our cloud services, providing you ability to backup your data and much more.

Click the myRTI icon on the Ocean backstage, or visit myrti.rtigroup.com to find out more.



For more information and training possibilities, please contact your local RTI representative or visit the RTI Academy website, www.rtigroup.com/training/



www.rtigroup.com/training/