



INDEPENDENT X-RAY
QUALITY ASSURANCE

RTI Best Practice Guide

Update Mako Firmware with Ocean Next

Overview

Firmware (FW) updates are required from time-to-time to ensure the best performance of your Mako system. With Mako, all firmware updates can be performed using Ocean Next software.

3 Key Steps

There are 3 key steps to updating your Mako firmware:

- Download the latest Mako FW package from RTI website:
rtigroup.com/software-and-documentation/ocean-next-for-mako/
- Save the “.zip” file to your local PC.
- Transfer the files to the Mako Base Unit.
- Update your system.

To update all your Mako Probes and Modules, connect them to the Base Unit during the upgrade process.

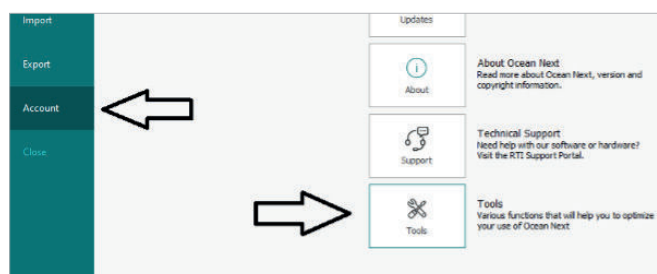
Download the latest Mako FW package from RTI website

1. Visit RTI web page:
rtigroup.com/software-and-documentation/ocean-next-for-mako/
2. Download the latest “.zip” file and save to desktop.

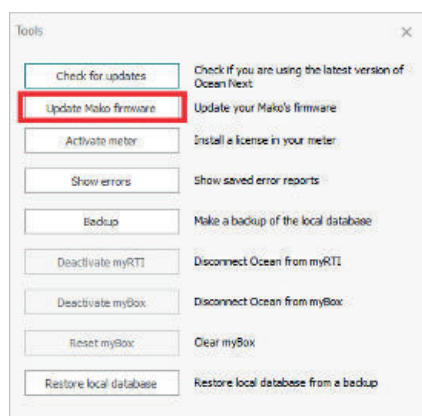


Updating Mako Firmware with Ocean Next

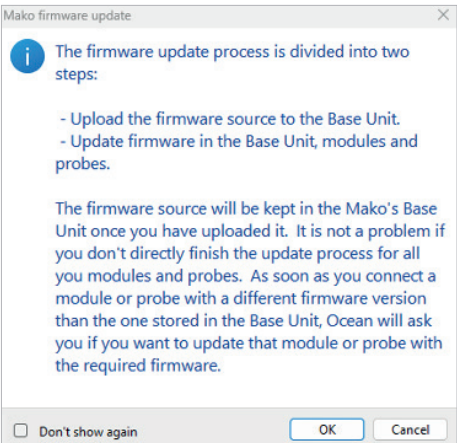
3. Start Ocean Next (v4.x onwards).
4. Connect your Mako Base Unit via USB Cable.
Note – Firmware updates are only allowed over USB connection. Firmware updates cannot be performed via Bluetooth connection.
5. From the left-hand menu bar, navigate to “Account”.
6. Select the “Tools” option.



7. Select “Update Mako firmware”:

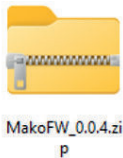


8. A new pop-up window with information appears:



9. Click “OK”.

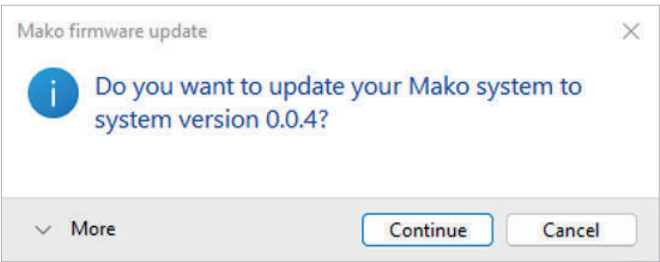
10. In the next dialogue, choose the “.zip” file that you saved to desktop in part. *File name format MakoFW_0.0.x.*



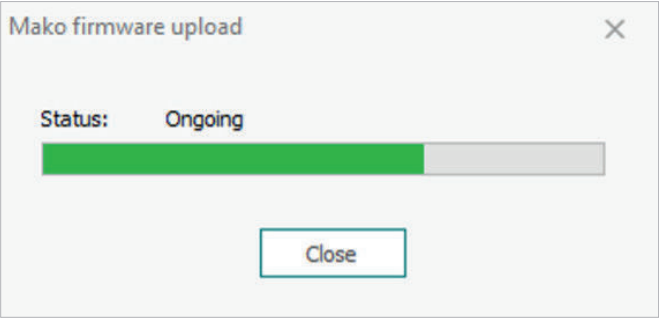
Transfer the files to Mako Base Unit

11. To send the FW package to Mako Base Unit, select “Continue”.

You can click “More” to see further details about FW versions for each Mako component.



12. The firmware package uploads to the Mako Base Unit.



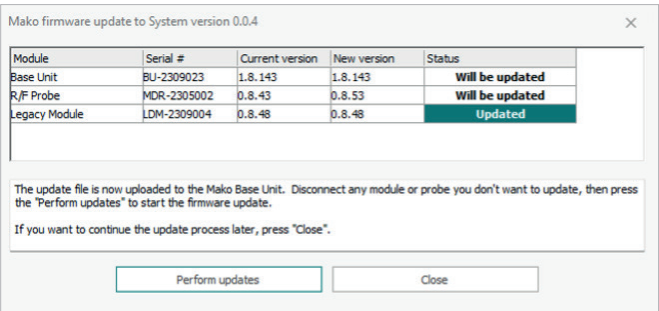
Update your Mako System

Note – once you have transferred the FW package to Mako Base Unit, you can then update Mako Base Unit, and any connected Mako Probes / Modules.

13. Updates will begin automatically.

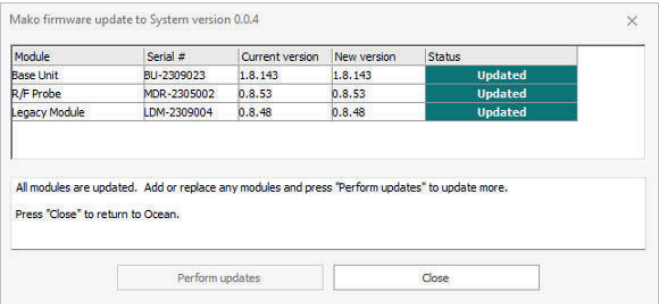
14. A new dialog window appears, showing the updates that are available for the Base Unit, and any connected Probes / Modules.

Note – Mako Base Unit will restart during update process.



15. If you have multiple Probes/Modules and only 1 cable available, you can update each Probe/Module individually by connecting them to the Base Unit, 1 at a time.

Select “Close” to complete the workflow.



If you have any further questions, please contact our RTI Support team on support@rtigroup.com.

