



INDEPENDENT X-RAY
QUALITY ASSURANCE

Use with

- Mako
- RTI Scatter Probe
- Piranha
- Cobia



What's new in Ocean next 4.0 Release highlights

What's New in Ocean Next™ 4.0

Ocean Next 4.0 is a major new feature release from RTI Group, with the major highlight that Ocean now supports the new Mako System. Piranha, Cobia and Scatter Probe are also supported, as with previous Ocean versions.

New feature highlights

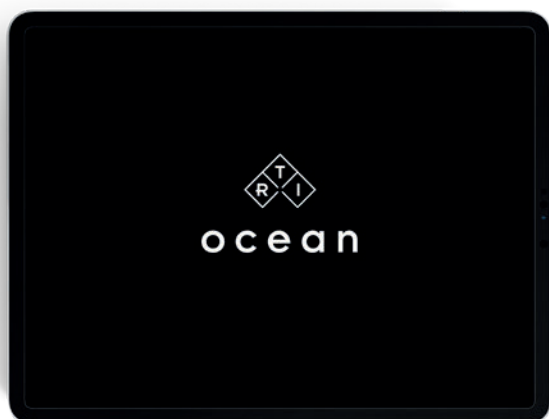
A meter and a milestone – Meet Mako!

Ocean 4.0 now supports the new Mako System, the most accurate, efficient and versatile X-ray meter ever. The next-generation multimodality X-ray meter has market-leading accuracy ($\pm 1.5\%$ kVp uncertainty) thanks to innovative new detector technology. Centered around efficiency, Mako provides the ultimate no-fuss experience, simple setup in all X-ray applications, and fully wireless capability.

The modular, future-proof system design provides ultimate configuration flexibility, with the widest-ever application range for X-ray Quality Assurance testing.

A new icon for a new era

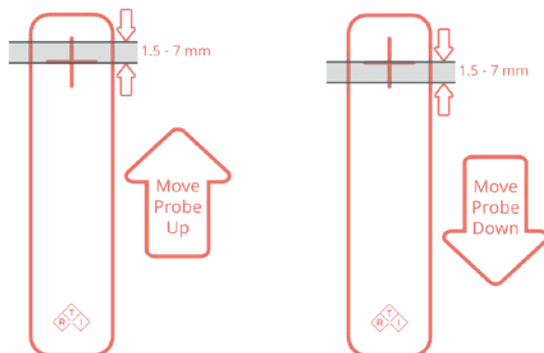
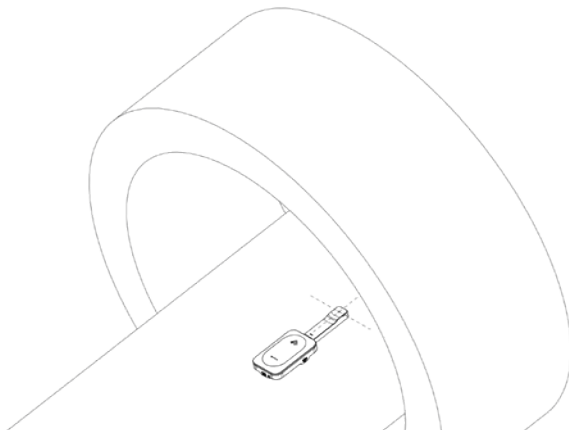
With the introduction of Mako comes an update to the icon and splash screen of Ocean Next software. Look out for the new icon on your desktop after installation.



Positioning Guide in narrow beam applications (dental and CT)

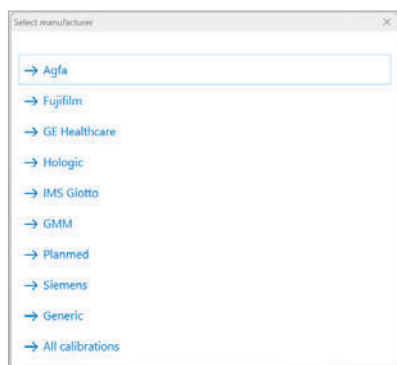
The groundbreaking design of the Mako Probes allows for unique functionality when it comes to narrow beam applications, such as panoramic dental and CT.

As shown below, once Mako R/F Probe is placed in the X-ray beam, Ocean Next software will provide position optimization guidance, to ensure the probe is perfectly positioned for your Xray measurement.

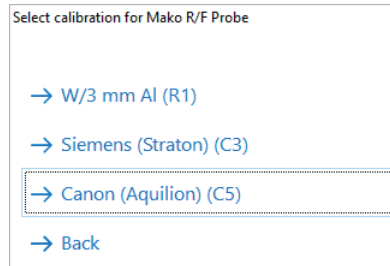


Fewer choices in Mammography and CT

With the revolutionary new detector design in Mako, choosing the right beam quality has never been easier.



When using the Mako Mammo Probe, calibrations are grouped according to X-ray manufacturer and model, with an additional 'generic' list if required. Quick Check adapts automatically to your selection.



When using the Mako R/F Probe in CT applications, there are only 3 options, a universal beam quality (W/3 mm Al, which can be used for all CT manufacturers/

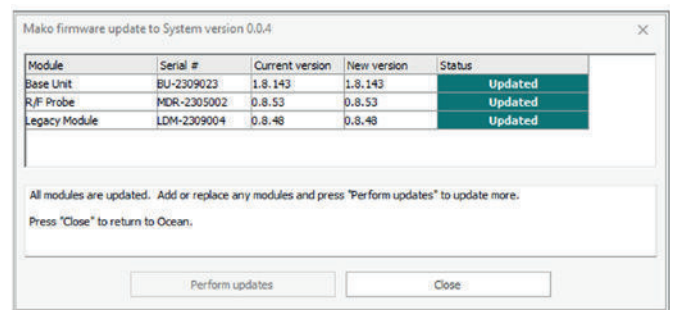
models) and 2 specific options for the Siemens Straton, and Canon Aquilion systems, as they have specific X-ray spectra profiles.

No "Position Check" for Mako in Mammography

Piranha users may be familiar with the "Position Check" feature, which ensures the alignment of the Piranha detector with the X-ray beam. With Mako, users will notice the absence of the Position Check feature (in Quick Check and Ocean Templates) and can proceed straight to measurements when using the Mako Mammo Probe, as Mako Probes can be placed in any orientation under the X-ray beam.

Updating Mako Firmware using Ocean software

When new Firmware versions become available, Piranha users will be familiar with the separate program called "RTI Updater" which updates the Firmware. With Mako, Ocean Next handles firmware updates, and will automatically notify and update the firmware if a newer version is available.



Templates for Piranha can be used for Mako

Previous Ocean users who have created Ocean Templates to automate and increase efficiency with their X-ray QA process will be pleased to see that existing Ocean Templates can adapt to Mako, when the new Mako System is connected.

Updates in myRTI

You can now access the new "Training" tab through myRTI (myrti.rti group.com). Simply visit myRTI and select the new Training tab to access Free Online Training, tutorial videos, and see the first videos of unboxing/getting started with the new Mako system.

Features continued from Ocean Next 3.0

myBox

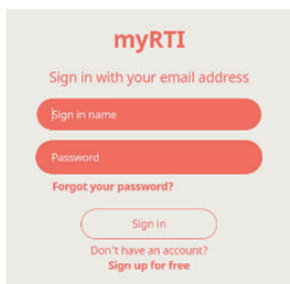
Forget about backing up – let Ocean Next do it for you! Ocean Next™ 4.0 also connects to our cloud service myBox, as with the previous version. All your Ocean Next templates and measurements will be stored automatically and kept safe. You can access your database from multiple devices and can now share measurements and templates with colleagues, directly from Ocean-to-Ocean. Significantly increase your efficiency, ensure traceability across your entire team and don't worry about backing up your QA data again.



Start your free trial today at myrti.rtigroup.com/mybox

myRTI log-in

Log-in to myRTI when you start Ocean Next.



When starting Ocean Next for the first time, you will be required to log-in to myRTI, which gives you access to your personal myRTI portal.

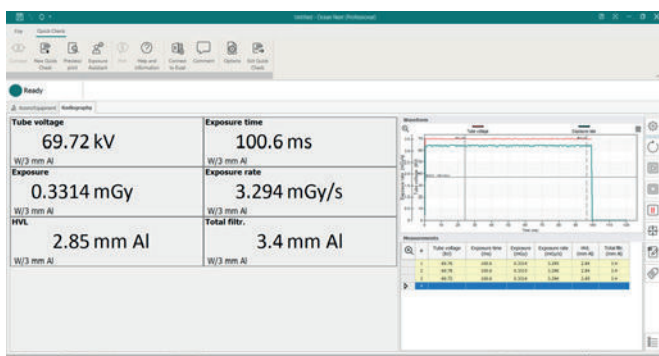
If you have not yet created an account, simply click on “Sign up for free”.

You will need internet on the first time you log-in to myRTI, but you do not need internet to use Ocean Next thereafter. myRTI will stay logged-in meaning you get all the benefits of myRTI without affecting efficiency. The new myBox service is hosted within myRTI.

Quick Check

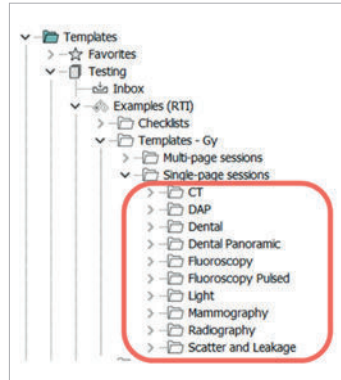
The popular Quick Check display continues with the same intuitive design. Designed for all users to view your measurement values, waveforms and exposure log in one screen.

Easily print your results using **Reporting** or link out to **Excel**. Ocean can always save your data for full traceability and compliance.



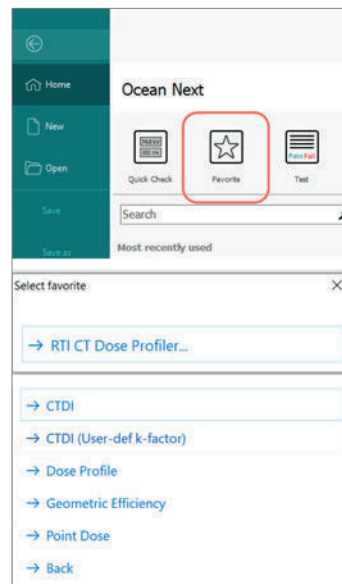
Example templates from RTI Group

Ocean Next makes it simple to customize and automate your workflows by providing “Example” templates that can be used across CT, DAP, Dental, Fluoroscopy, Light, Mammography, Radiography and Scatter applications. Find the Examples list in the “Test” view, and customize to your specific application.



RTI CT Dose Profiler (CTDP)

In Ocean Next 4.0, all the relevant templates for CTDP are stored as default in the Favorite menu, increasing efficiency and reducing set-up time. For those new to using CTDP, the CTDP manual will guide you through every step.

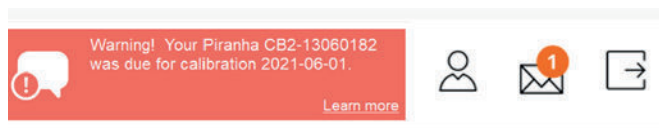


Ocean Next in the Production Environment

Ocean Next has the same ability to allow automation within the production environment. Users in the production environment can develop software (for example using the widely used LabView SW) to control Ocean automatically and utilise Piranha without manual interaction.

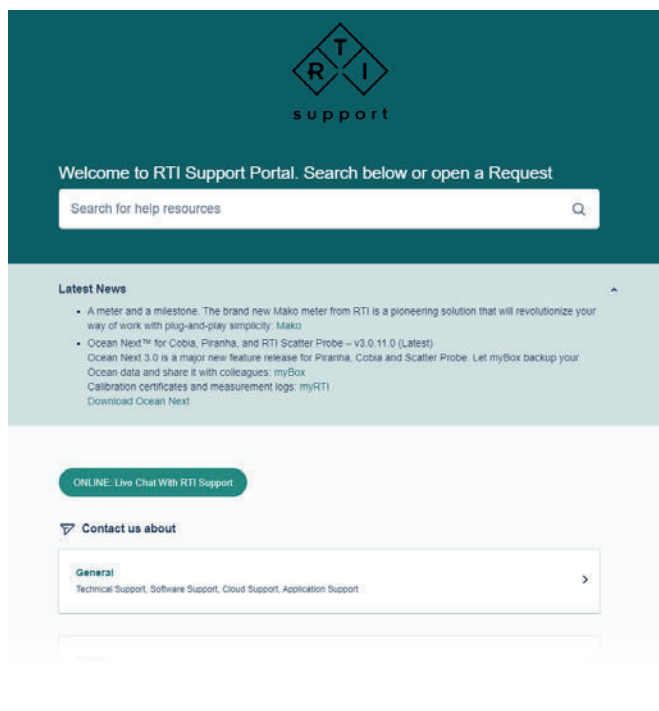
Calibration reminders

Ocean Next will show the calibration warning lamp on the Ocean Next Home screen, informing of upcoming calibration due dates and when the due date has passed (image). Click the reminder to visit the RTI Service & Calibration web page.



RTI Support Portal

The RTI Support portal can be accessed through myRTI, and allows users to find help and services through an inventory of informative articles. Plus, you can open a Live chat or submit a support request to our team of RTI experts. We are here to support you.



FAQ: Updating from Ocean 2014 to Ocean Next

Can I keep my data if I upgrade from Ocean 2014 to Ocean Next?

Yes. When you start Ocean Next, your database can automatically be converted to the new format so you can carry across all your data. Your old database is also kept in the old format.

Can I still use Ocean 2014 while I start using Ocean Next?

Yes, your data will be available on both software platforms. However, the two versions don't share the same root folder, so any new measurements made in Ocean Next will not appear in Ocean 2014.

I use templates in Ocean 2014 - will these work in Ocean Next?

Yes. All templates created in Ocean 2014 will work in Ocean Next.

Will all my data automatically be backed up with Ocean Next?

Not automatically, but by subscribing to myBox, your entire database is automatically backed up digitally, so you can recover at any time, from any new device. myBox has a free trial which you can begin with, to experience the benefits.

Are there any How-To videos to help me get up and running?

Yes. Simply sign-up for free to myRTI when you first launch Ocean Next and you will have access to the RTI Support and Resource Centre.

What happens to my license level?

Your license level will be the same in Ocean Next as it was in Ocean 2014. Note - Ocean "Connect" is now called Ocean "Advantage" in Ocean Next and has many more features than in Ocean 2014.

Can I use the new software on my current device?

Yes. Ocean Next will work on the same device you used for Ocean 2014. [Check the minimum PC requirement specs here.](#)

Where can I download the new software?

Simply follow this link to <https://rtigroup.com/resource-center/rti-software-downloads>.



RTI Group Headquarters
Flöjelbergsgatan 8C
SE-431 37 Mölndal, SWEDEN

Phone: +46 (0) 31 746 36 00
sales@rtigroup.com
www.rtigroup.com

RTI Group North America
33 Jacksonville Road, Bldg. 1
Towaco, NJ 07082, USA

Phone: +1 800-222-7537
sales.us@rtigroup.com
www.rtigroup.com